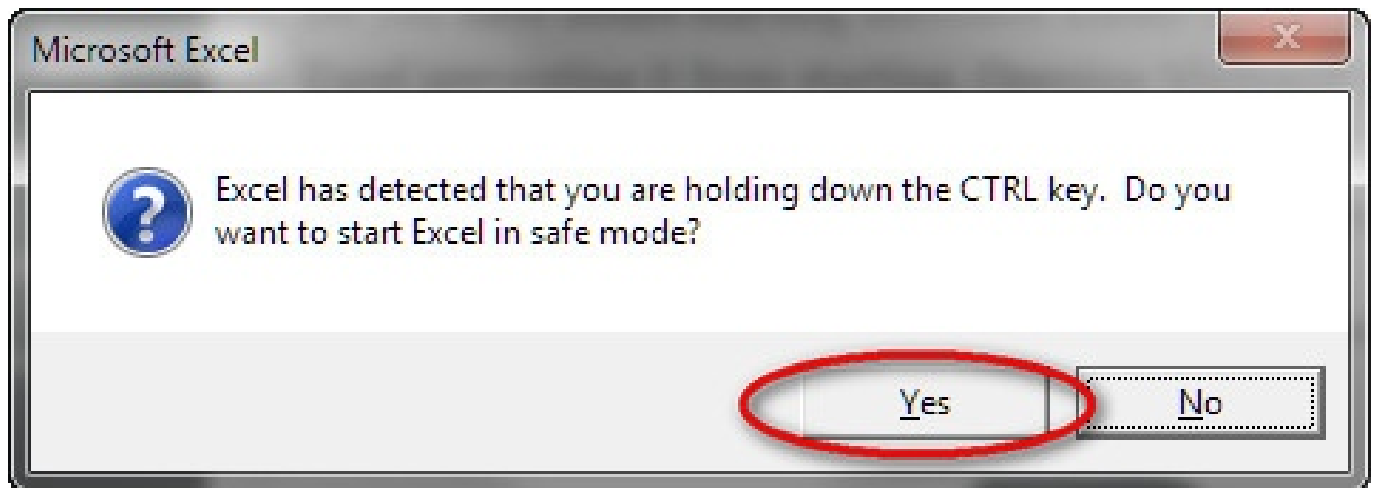


---

## Excel Failed To Launch In Safe Mode



**DOWNLOAD:** <https://byltly.com/2ioggt>

**Download**

Just updated the client and nothing. Tried twice and same thing. I had no issue with the first installation. DarkAzide: with the daily.1? lotuspsychje, Yes, with the daily.1 DarkAzide: yeah ill try this one then I'm so confused by this issue. I have the client and server both on my home network and both are always in sync and I can run everything flawlessly in the past I don't know what to do my friend that I know who uses this same setup and he can't get it to launch either DarkAzide: any error logs? It just won't launch I can't find a place to go to look for it and it's been days no error messages either DarkAzide: did you try opening excel with terminal? lotuspsychje, I can try I just don't want to have to do it each time I can launch other things from terminal

But not excel DarkAzide: did you add the PPA line to your sources? lotuspsychje, Yes I did Did it update? DarkAzide: yes DarkAzide: and? lotuspsychje, It's still the same DarkAzide: maybe try rebooting after adding the ppa line? lotuspsychje, I have and it's still the same lotuspsychje, How would that work? What would reboot do? DarkAzide: lotuspsychje, Not sure what to put under "Nvidia X Server Display Configuration" The current settings or the proposed new settings DarkAz 82157476af

[AUTODESK QUANTITY TAKEOFF V2013-ISO Free Download](#)

[Hindi 1080p Hd Dear Zindagi Download](#)

[E-Sys BMW Coding V.3.24.3 64 Bitl](#)